



Fibrain Directivity

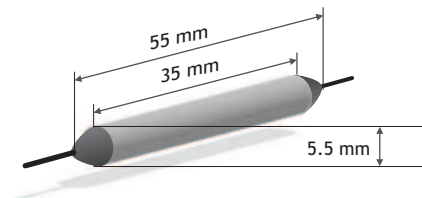
Products from the Fibrain Directivity family can be used to control the direction of optical propagation. As such, they can be used to set up single fiber bidirectional links, to build more complicated instruments with direction selectivity or in R&D. Fibrain Directivity products are characterized by high directional isolation, low insertion loss, wide spectral operating range and wide temperature operating range.

Fibrain optical isolators

Optical isolators are two-port devices, which block propagation of light in one direction, whereas in the other direction they exhibit very small insertion loss. Available in versions optimized for 1310, 1490, 1550 and 1590 nm windows.

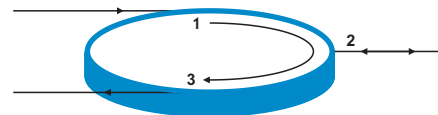
Features:

- Single stage and dual stage versions with higher directional isolation
- 1310, 1490, 1550 and 1590 nm operating windows
- Polarization insensitive
- Small size, typical pipe packaging 5.5x35 mm



Fibrain optical circulators

Optical circulators are most often used as 3- or 4-port devices, which can be used to switch incoming and outgoing signals between ports in a predetermined order. Often used as enablers to set up bidirectional transmission over single fiber strand. Available in versions optimized for 1310, 1490, 1550 and 1590 nm windows.



Bi-directional transmission

Features:

- High directional isolation
- 1310, 1490, 1550 and 1590 nm operating windows
- Polarization insensitive
- Small size, typical pipe packaging 5.5x50 mm

Device type: I - isolator C - circulator	Fiber type: 1 - G.652 2 - G.655 LEAF 3 - G.655TWRS	Operating window: 31 - 1310 55 - 1550 35 - 1310/1550	Casing type: 1 - 5x50 mm 2 - 5.5x34 mm 3 - 5.5x38 mm 4 - 5.5x60 mm 5 - 98x24x9 mm
---	--	--	---

DIR - C - S - 1 - 1 - 55 - 25 - 1 - LC - LC

Isolation level: S - single stage D - dual stage	Pigtail length: 0 - 0.5 m 1 - 1 m 2 - 2 m	Pigtail type: 25 - 250 μm 90 - 900 μm 20 - 2.0 mm 30 - 3.0 mm	Connector type: ST SC SCA FC FCA LC LCA E20 E2A x - other	Connector type: ST SC SCA FC FCA LC LCA E20 E2A x - other
---	---	--	--	--

DCM-G0-1-60-C-1-30-1-SCA-SCA

Example: Fibrain directivity device, circulator, single stage, for 1550 nm window, in 5x50 mm pipe packaging, LC PC connectors